



# GMT MONTHLY MEMBERSHIP PROGRESS REPORT

Results as of: 8/31/2019

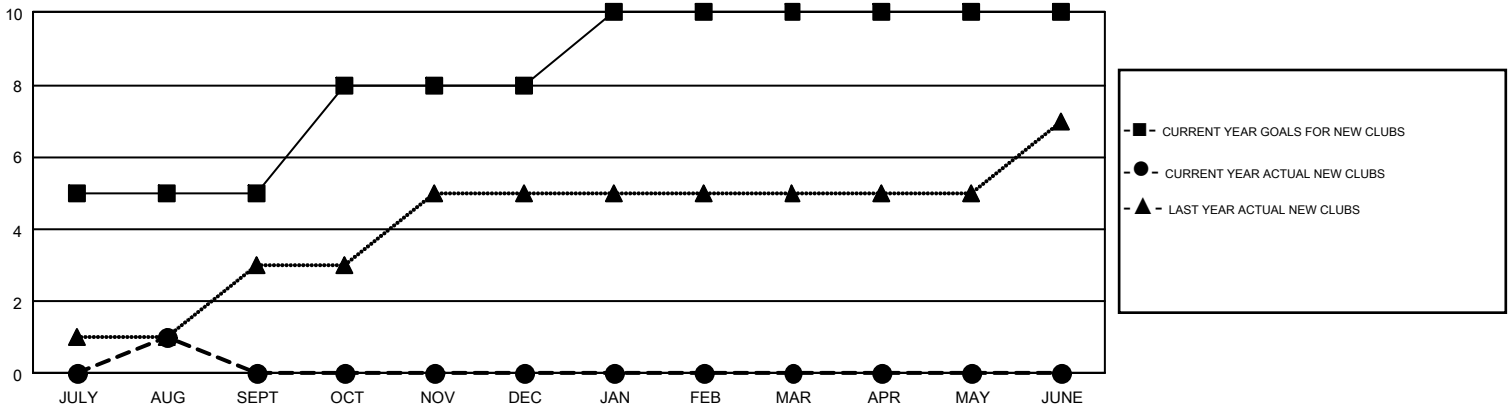
## GMT Constitutional Area 5 - E, Group P

GMT: OPEN

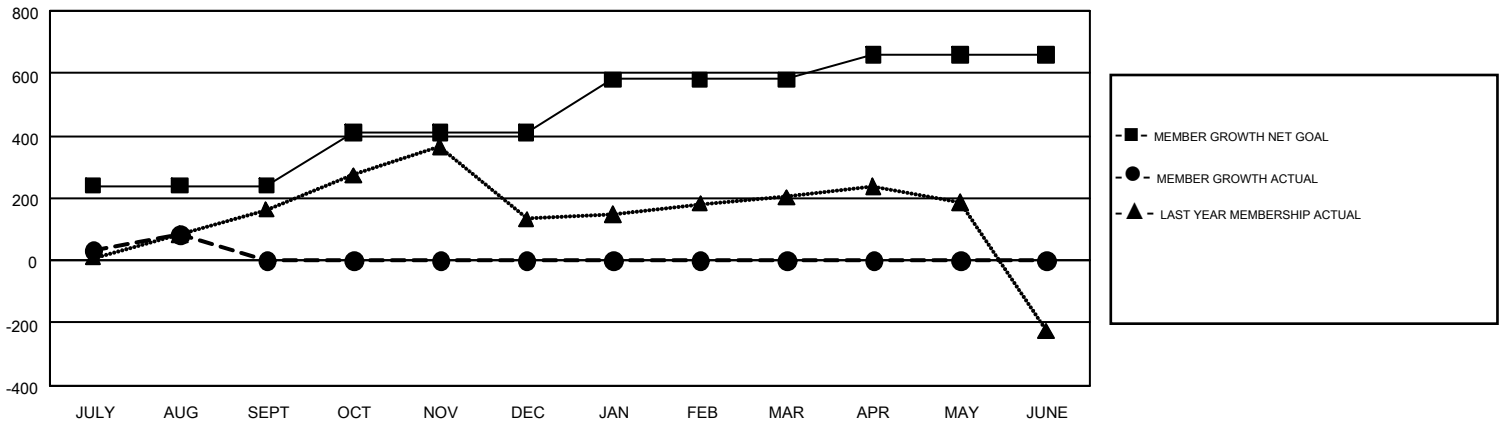
REPORT DOES NOT INCLUDE CLUBS IN UNDISTRICTED AREAS.

Clubs				Members			
RESULTS FOR 2019-2020				RESULTS FOR 2019-2020			
QUARTER	NEW CLUB GOAL	NEW CLUBS	DROPPED CLUBS	QUARTER	MEMBER GROWTH NET GOAL	MEMBER GROWTH ACTUAL	DROPPED MEMBERS ACTUAL (including transfers)
JULY/AUG/SEPT	5	1	0	JULY/AUG/SEPT	240	167	64
OCT/NOV/DEC	3	0	0	OCT/NOV/DEC	170	0	0
JAN/FEB/MAR	2	0	0	JAN/FEB/MAR	170	0	0
APR/MAY/JUNE	0	0	0	APR/MAY/JUNE	80	0	0

GOALS AND ACTUAL NEW CLUBS CUMULATIVE



GOALS AND ACTUAL MEMBERS CUMULATIVE



DROPPED CLUBS: 0	43 CLUBS OF 291 ADDED 1 OR MORE NEW MEMBERS	<b>GENDER DISTRIBUTION</b> MALE                    4,161 (52.83%) FEMALE                   3,715 (47.17%)
<b>DROPPED MEMBERS</b> DECEASED                    2 CLUB CANCELLED               0 OTHER                            62 <hr/> TOTAL                            64	<a href="#">CLICK HERE FOR CUMULATIVE MEMBERSHIP DATA</a>	TOTAL FAMILY UNIT MEMBERS                    426  FAMILY MEMBERS PAYING HALF DUES                    227